

MONAGHAN  
FARM  
**TRAIL RUN**



PRESENTED BY  
CHAS EVERITT



9 MAY 2026

**RACE GUIDE**



# THANK YOU & **WELCOME**

Welcome to the first Monaghan Farm Trail Run Presented by Chas Everitt International Property Group, set within the open countryside of Monaghan Farm. This event brings runners onto trails that move through rolling terrain, natural landscapes and wide open space. With 7.5km, 14.5km and 21km distances, there is a route for every runner to take on in their own way.

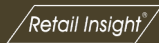
From the start line to the finish, everything has been put in place to give you a smooth and well-run experience. Routes are clearly marked, timing is accurate and water points are positioned to support you along the way. Whether you are pushing for a time or simply enjoying the run, the focus is on giving you a course you can trust and a day you can be part of.

As the first runners to take this on, you are part of the beginning. Thank you for showing up, for backing this event and for being on the start line with us. We are looking forward to seeing you out on the trails.

## OUR SPONSORS

---

Click below and go show some support to our sponsors social pages!



**CHAS EVERITT**  
INTERNATIONAL PROPERTY GROUP

# WAKE UP IN NATURE EVERYDAY

## Where Nature Meets Home

### A LIFE ROOTED IN NATURE

Imagine waking up each morning to the sounds of nature, surrounded by open skies and rolling savannah grasslands. Monaghan Farm spans 517 hectares, with a remarkable 97% of the land preserved as open space with only 3% ever built upon keeping vast stretches of grassland, bush, and river frontage exclusively for residents to enjoy.

With over 7 km of scenic river frontage and recreational trails designed for walking, biking, and horse riding, every day here feels like an escape, yet it remains entirely your home.



CHAS EVERITT  
**LUXURY**



For More Information, contact the following

**Robert Baron Jones:** 071 906 0930

**Shaun Coetzer:** 072 304 0659

**Rory O'Hagan:** 083 328 8888

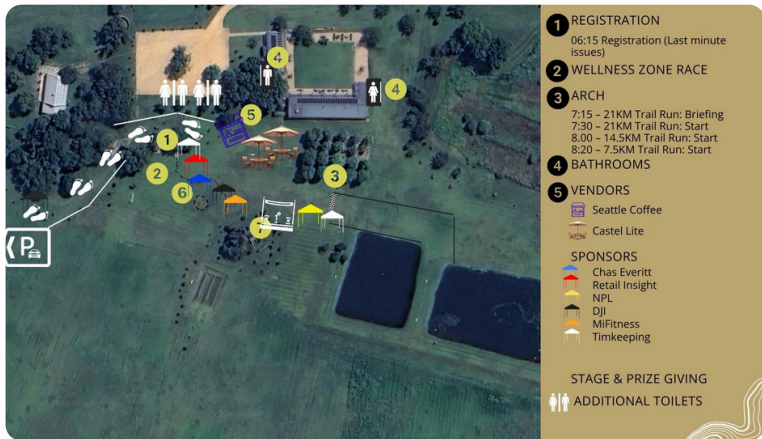
**Lulama Konza:** 064 515 6126

### CONNECTED, SECURE, AND CLOSE TO IT ALL

Living at Monaghan Farm means never having to choose between the tranquility of the countryside and the convenience of the city. The entire estate is protected by modern security systems, and high-speed fibre broadband is available to all homes, ensuring unrivalled connectivity.

Situated between Lanseria Airport and Muldersdrift, the estate is approximately 45 minutes from Johannesburg, placing world-class urban amenities well within reach while your home remains a true sanctuary to return to.

# RACE VILLAGE | REG & START



## RACE NUMBERS

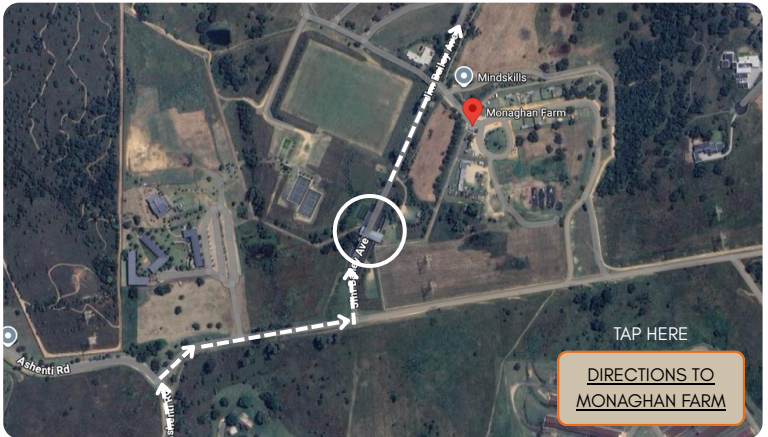
Each Race distance have a different colour. It is essential that participants run with the right race distance number as the marshals will be guiding them to the right route based on your race number.

**Race Numbers must be worn in front where Marshals can clearly see the race number at all times**



Please ensure that participants complete the tear off strip. Before the race for emergency purposes.

# HOW TO ENTER



## FEW THINGS TO KEEP IN MIND

Please ensure you enter through the main gate on Jim Bailey Ave and you will be directed to Race Village for registration.

- 1 - Access will only be permitted if the driver is in possession of a valid drivers license and the vehicle being issued with a valid vehicle license disc.
- 2 - Ensure your ticket is visible and valid when presenting to the gate.
- 3 - The speed limit is strictly **40KM!**
- 4 - Make sure to bring sun screen and a cap for when you are on the trail.
- 5 - Please note that littering will not be tollerated when on course or within race village

## ANY MORE QUESTIONS?

Please feel free to reach out to us at [info@in-reach.co.za](mailto:info@in-reach.co.za)

### PLEASE NOTE

Any contravention of the speed limit by a visitor / contractor will result in a penalty being imposed by Monaghan Farm against the member/resident who has allowed you access and may be recovered by the member / resident from the actual transgressor.

# PARKING



## HOW TO LOCATE PARKING

Please follow all directional race signage and race marshals to make your way to registration.

Enter through the main gate on Jim Bailey Ave and keep on Jim Bailey Ave until instructed otherwise.

**TAP HERE**

[DIRECTIONS TO  
MONAGHAN FARM](#)

# EVENT SCHEDULE

## REGISTRATION & BRIEFING

**6:15am** - Registration Opens  
**7:15am** - 21KM Trail Run : Briefing  
**7:45am** - 14.5KM Trail Run : Briefing  
**8:10am** - 7.5KM Trail Run : Briefing

## EXPECTED FIRST RUNNERS IN

7.5km from **8:56am**  
14.5km from **9:04am**  
21km from **9:05am**

## PRIZE GIVING

Between **10:30am - 10:45am**

## START TIME

**7:30am** - 21KM Trail Run : Start  
**8:00am** - 14.5KM Trail Run : Start  
**8:20am** - 7.5KM Trail Run : Start

## LAST RUNNER & CUT-OFF

**21km : 11:30am ( 4 Hours )**



CHAS EVERITT  
INTERNATIONAL PROPERTY GROUP



Retail Insight®



# TRAIL OVERVIEW

## ELEVATION PROFILE

---

IN-REACH  
LIFESTYLE



CHAS EVERITT  
INTERNATIONAL PROPERTY GROUP



Retail Insight®



# 21KM COURSE & ELEVATION

A true half-marathon adventure through the heart of Monaghan Farm. This route dives deep into untouched grassland, river frontage, and long, quiet stretches of open terrain. Rolling climbs test the legs, while expansive views and raw nature make every kilometre worth it. Built for runners who want space, solitude, and a proper challenge.

## 21 K M ROUTE & ELEVATION

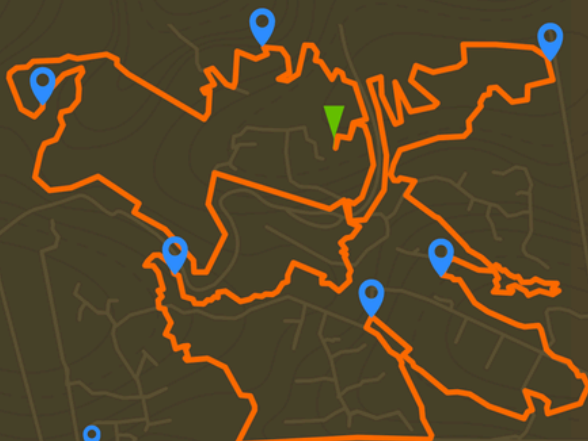
### ROUTE KEY



START &  
FINISH

359M

358M



Trails	WP 1	WP 2	WP 3	WP 4	WP 5
21km	5.70km	5.25km	8.55km	12.5km	17.5km



GPX DOWNLOAD MANDATORY

GPX DOWNLOAD

# 14.5KM COURSE & ELEVATION

The 14.5km route offers the full Monaghan experience. Expect a mix of flowing single track, open farm roads, and tranquil river sections, with enough elevation to challenge you while remaining highly runnable.

A rewarding middle-distance route that showcases the estate's natural beauty from start to finish.

## 14.5KM

ROUTE & ELEVATION

### ROUTE KEY



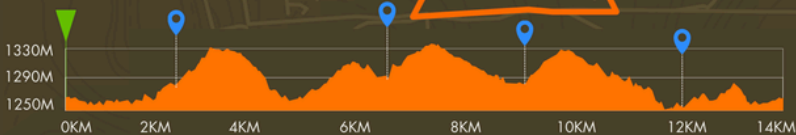
START &  
FINISH



230M



229M



#### Trails

14.5km

#### WP 1

5.70km

#### WP 2

5.25km

#### WP 3

8.55km

#### WP 4

12.5km



GPX DOWNLOAD




# 7.5KM COURSE & ELEVATION

A beautifully flowing introduction to Monaghan Farm. This route winds through open grasslands and along gentle farm roads, with rolling terrain and river views that keep things interesting without being overwhelming.

Perfect for first-timers, social runners, or anyone chasing a fast, enjoyable run in nature.

## 7.5KM ROUTE & ELEVATION

### ROUTE KEY

-  START & FINISH
-  230M
-  229M



Trails

WP 1

WP 2

7.5km

3.50km

5.67km



GPX DOWNLOAD

# ROUTE CUT OFF TIMES

---

Last Runner and Cut-Off for each trail

- 21KM: **11:30pm (4 Hours)**

# WATER POINTS & LITTER

---

Water points will be situated across all routes, and there will be plenty to refill your energy as you crush each section of the Monaghan Farm Trail Run and they will be stocked and looked after by:

**All water points will have:**

- NPL Hydration Drink – Refreshing and electrolyte-rich
- Water Sachets, bottles or cups with water in



- Rapid Isotonic (Electrolytes)
- NPL Hydrade Bars
- NPL Hydrade Drink



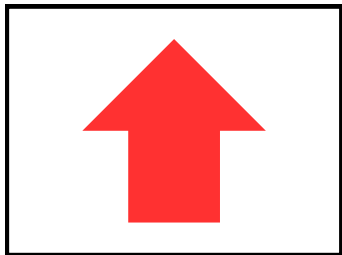
Water points will offer a combination (or all) of the following: Coke, Fresh oranges, bananas, salted baby potatoes, and jelly sweets to keep you fueled, hydrated, and moving strong.

# DIRECTIONAL SIGNAGE

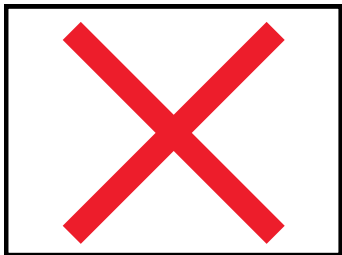
---

Directional signage will be visible throughout each route, make sure to have the signs / markers visible to your left at all times.

**Signage that will be used throughout the route and trail.**



**Directional Boards**



**No Entry**



## **Route Marking & Distance Splits**

All routes will be marked using red directional arrows. Please be aware of the distance you're running and listen carefully to marshal instructions at split points. Clear signage will be placed well in advance to indicate where each distance splits off – follow the signs for your registered distance.

## **Marshal Guidance**



To ensure a smooth and safe experience for everyone, please follow all instructions given by our on-route marshals throughout the event at Monaghan Farm. Our marshals are there to guide you, keep you on the correct route, assist where needed and help manage the flow of runners across the course. Listening to their direction will not only keep you safe, but will also allow the event to run efficiently for all participants.

# OUR SPONSORS

---

MONAGHAN  
FARM



[VISIT THEIR WEBSITE](#)

CHAS EVERITT  
INTERNATIONAL PROPERTY GROUP

[VISIT THEIR WEBSITE](#)

*Retail Insight*<sup>®</sup>

[VISIT THEIR WEBSITE](#)



NUTRITIONAL PERFORMANCE LABS

[VISIT THEIR WEBSITE](#)

# OUR SPONSORS

---

## **A MASSIVE THANK YOU TO OUR SPONSORS**

A big thank you to our partners for making the Monaghan Farm Trail Run presented by Chas Everitt International Property Group possible.

Events like this don't come together without the right people behind them. From the trails to the race village, every part of this experience has been shaped by the teams at Monaghan Farm, Chas Everitt International Property Group, Retail Insight, NPL and In-Reach.

Their support, effort and commitment have allowed us to create an event that brings people together, celebrates movement and delivers an experience worth showing up for. From planning to execution, every detail has been made possible through their involvement. We truly appreciate every team that has played a role in bringing this to life. Make sure to check out their websites and social media pages and show your support.

MONAGHAN  
FARM

# TRAIL RUN



PRESENTED BY  
CHAS EVERITT

SEE YOU ON THE TRAILS!